

Valentine Box

Papercrafting Threads  
By Peri Beal



Cut Crumb Cake cardstock to 8 ½" x 7". Score landscape at 2", 4", 6" and 8". Score portrait at 2" and 5"

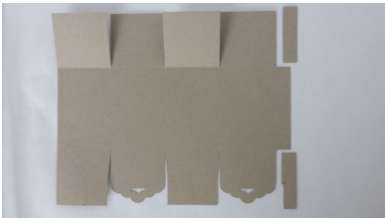

Position cardstock in landscape mode with the ½" side on the right. Turn Scalloped Tag Topper punch over so back side is facing up. Insert cardstock into punch so first full panel on right is centered in the punch and punch.



Repeat on the second from the left panel.



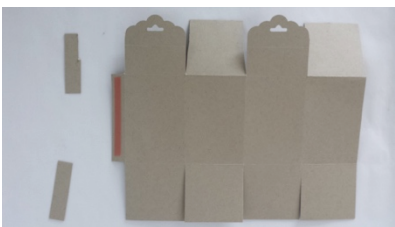
Trim  $\frac{1}{2}$ " piece, and cut other score lines as shown. TIP: Angle the three edges slightly as shown.



Fold back two square tabs and score flaps at 1".



Adhere Tear and Tape or Sticky Strip to small side flap and outside bottom flap.



Peel and stick side tab, flattening 'box'.



Decorate box.

Cut Blushing Bride Glitter paper to  $1\frac{7}{8}$ " x  $2\frac{7}{8}$ " and  $1\frac{7}{8}$ " x  $\frac{3}{4}$ ". Punch heart out of middle of bigger piece. Set aside

Cut Watercolor paper  $1\frac{3}{4}$ " x  $2\frac{3}{4}$ " and  $1\frac{3}{4}$ " x  $5\frac{5}{8}$ ". Stamp emblem from Timeless Textures in Versamark on Watercolor Paper. Emboss with white embossing powder. Apply Blushing Bride ink direct to window sheet, spritz with water, and drag over watercolor paper, transferring ink. Stamp swirl from Timeless Textures in Blushing Bride over embossing.

Layer finished watercolor pieces over the Blushing Bride glimmer paper pieces, using multipurpose glue for the adhesive.



Assemble and layer front embellishment as shown below. Stamp the emblem in Crumb Cake on the 3 other sides of the flattened box.



Assemble box by closing the bottom flaps, with the last flap with the tape securing the other flaps. Fill with your choice of candy.



Attach a length of Blushing Bride Sequin Trim to a Mini Clothespin using a glue dot. TIP: Use the Fine Tip Glue Pen on the back of the sequins on each end to secure the sequins.

Double a length of Twine and tie a bow, then adhere with a rolled up glue dot just above the sequin trim on the clothespin.

Fold top flaps and clip with clothespin.

