

Not So 'Impossible' (Self Closing) Box

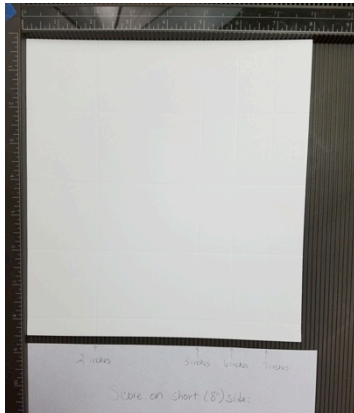
by Peri Beal of [Papercrafting Threads.com](http://PapercraftingThreads.com)



- Step 1. Cut Base Cardstock 8 ½" x 8" [Whisper White in sample]
Score long side (8 ½") at 2", 4", 6" and 8"



Step 2. Score short side (8") at 2", 5", 6" and 7"

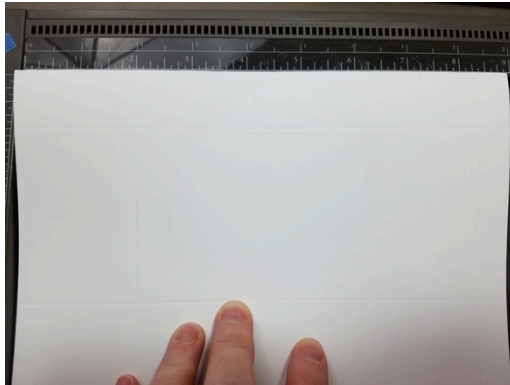


Step 3. Cut DSP (4 of each) $1\frac{3}{4}$ " x $1\frac{3}{4}$ " and $1\frac{3}{4}$ " x $\frac{3}{4}$ " [Painted With Love Specialty DSP]
Cut mat (4 of each) $1\frac{7}{8}$ " x $1\frac{7}{8}$ " and $1\frac{7}{8}$ " x $\frac{7}{8}$ " [Gold Foil]

Step 4. Place base cardstock in landscape position. Fold top back on second horizontal scored line.



- Step 5. Butt folded edge up against top of Scorer, and make tick marks on edge at 1", 3", 5" and 7".



- Step 6. Keeping the cardstock folded, cut at an angle from the tick mark to the score line on left side.



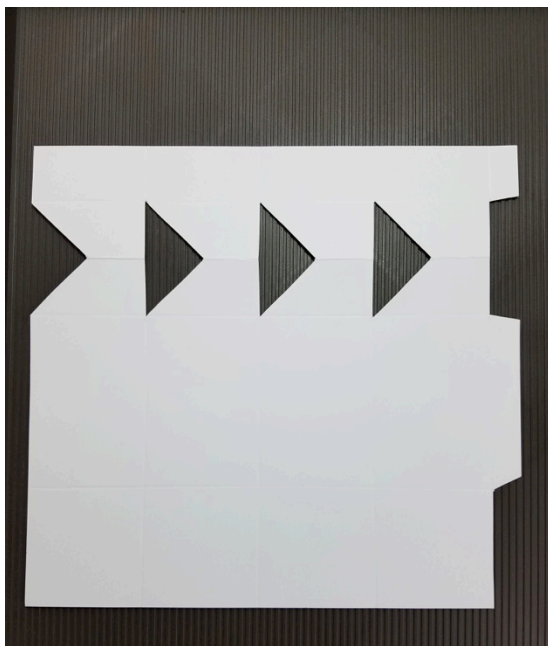
- Step 7. Cut scored lines from 2nd line (the one that's still folded) to 3rd line.



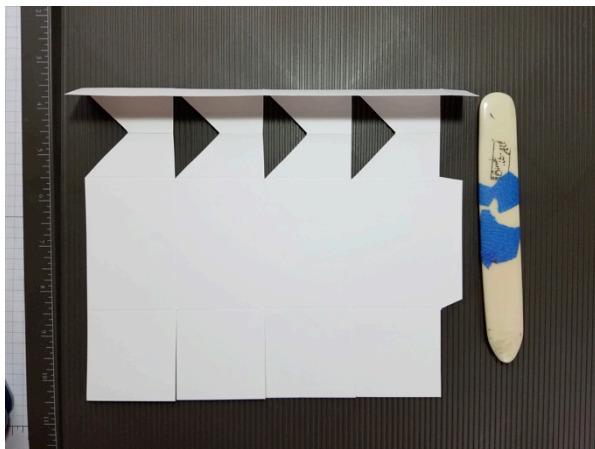
Step 8. Then cut angles in the same fashion as the first cut on the left. Cut tab on top right.



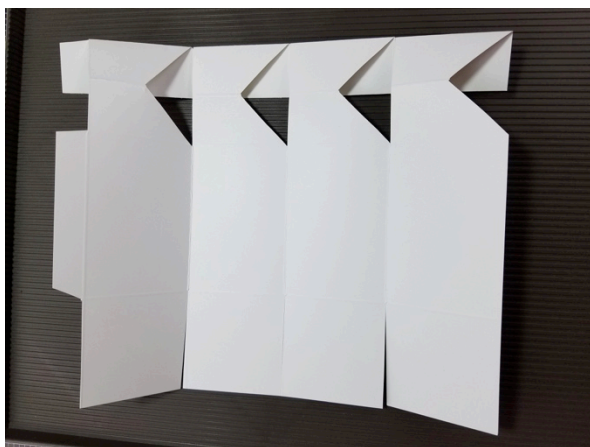
Step 9. When done cutting, piece should look like this when opened fully:



- Step 10. Cut bottom slits from bottom edge to first scored line, and fold and burnish top down towards you:



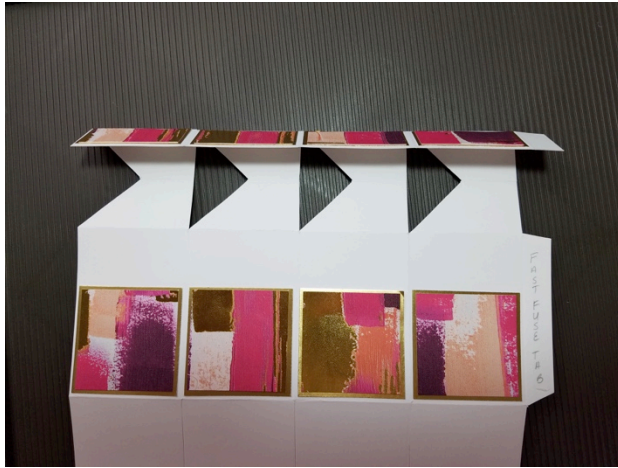
- Step 11. Flip piece over and fold and burnish all long score lines with a bone folder:



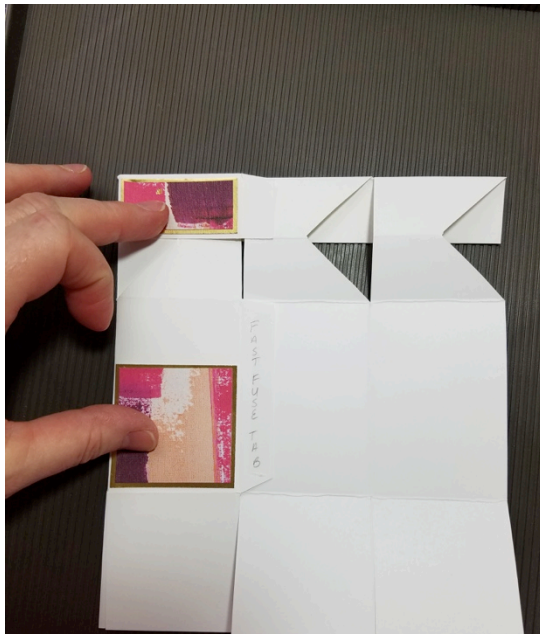
- Step 12. Flip over and set aside. Adhere DSP pieces to corresponding mat pieces cut earlier. Then adhere these decorative pieces to the base piece as shown:



Step 13. Apply Fast Fuse or Tear N Tape to the large tab:



Step 14. Flip piece over and fold Fast Fuse tab halfway across:



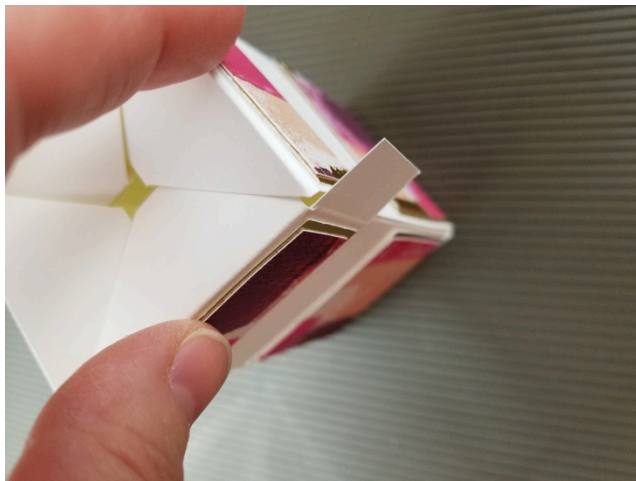
Step 15. Fold in right side and press to adhere to large tab:



Step 16. Pick up piece and 'square it'. Decide which side is the front, and fold in flaps, adding adhesive to the last one.





Step 17. Place box upright, and gently push the lid down.



Step 18. Make any adjustments needed to square up the lid, then add adhesive to top of small tab and tuck behind the adjacent overhanging lid side. Press down to adhere.



Step 19. Decorate as desired.

Top View with Box Closed:	Side View with Box Open:
	
Top View with Box Opened:	Box Decorated:
